

SuDS Adoption Update

March 2022

Since the introduction of the sewerage adoption code in April 2020, the sector guidance has suggested that full continuous sewerage networks should be adopted by one party and if drainage is offered for adoption then SuDS should be included too.

To give customers more time to familiarise themselves with the new requirements and standards, we have been offering customers the option to submit SuDS features for adoption for the past few years.

In September we shared additional support for customers in the form of our [updated SuDS guidance on our website](#) and detail regarding the free pre design application service.

We think more can be done to embrace SuDS adoption within the industry and the next stage of our plans is to align our advice to the wider sector guidance.



SuDS adoption policy – what’s changing and what does it mean for you?

From 1 October 2022 all new S104 applications must:

Include any SuDS that are acting as sewers that form part of a continuous network for adoption. We will not accept sewers for adoption that discharge to privately owned SuDS components. We will not adopt off-line exceedance overflow storage or permit land drainage connectivity into adoptable SuDS.

Adoptable SuDS will be assessed against the standards within the Sewerage Sector Guidance (Design & Construction guidance & CIRIA SuDS Manual)

Here are some visual examples showing the extent of adoption for different scenarios:
(Please note these images are to show arrangement only and may not indicate accepted design standard)

**Communal Infiltration Solution
(Discharging to ground)**

we must adopt the full inline sewerage system (blue) including the infiltration solution (purple).

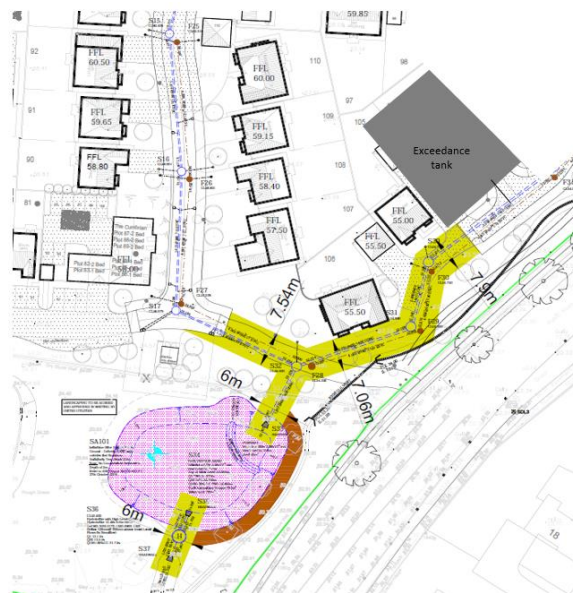


**Inline Detention Basin
(Discharging to watercourse)**

we must adopt the full inline system (blue) including any SuDS (purple) we will adopt up to and including the headwall structure to the watercourse.

On culverted (piped) watercourses the manhole will remain part of the riparian owned watercourse.

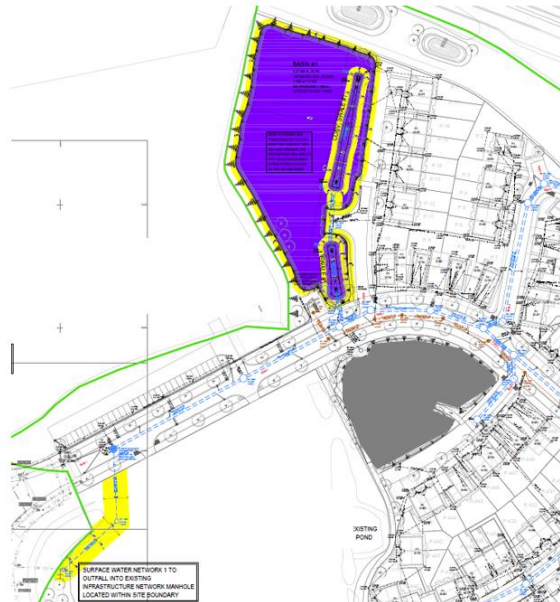
Any overflow SuDS (grey) will not be adopted)



**Inline Detention Basin
(Discharging to surface water sewer)**

we must adopt the full inline system (blue) including any SuDS (purple) we will adopt up to and including the manhole on existing sewer.

Any overflow SuDS area (grey) will not be adopted)



**Inline Swale
(Discharging to watercourse)**

we must adopt the full inline system (blue) including any SuDS (purple) we will adopt up to and including the headwall structure to the watercourse.

Any overflow SuDS area (grey) will not be adopted)



Note: In all the above scenarios the system being offered for adoption must be designed with sufficient flood protection for the worst case 30 year event. If the local planning authority requires more volume, we can assess upsized networks on a case by case basis.

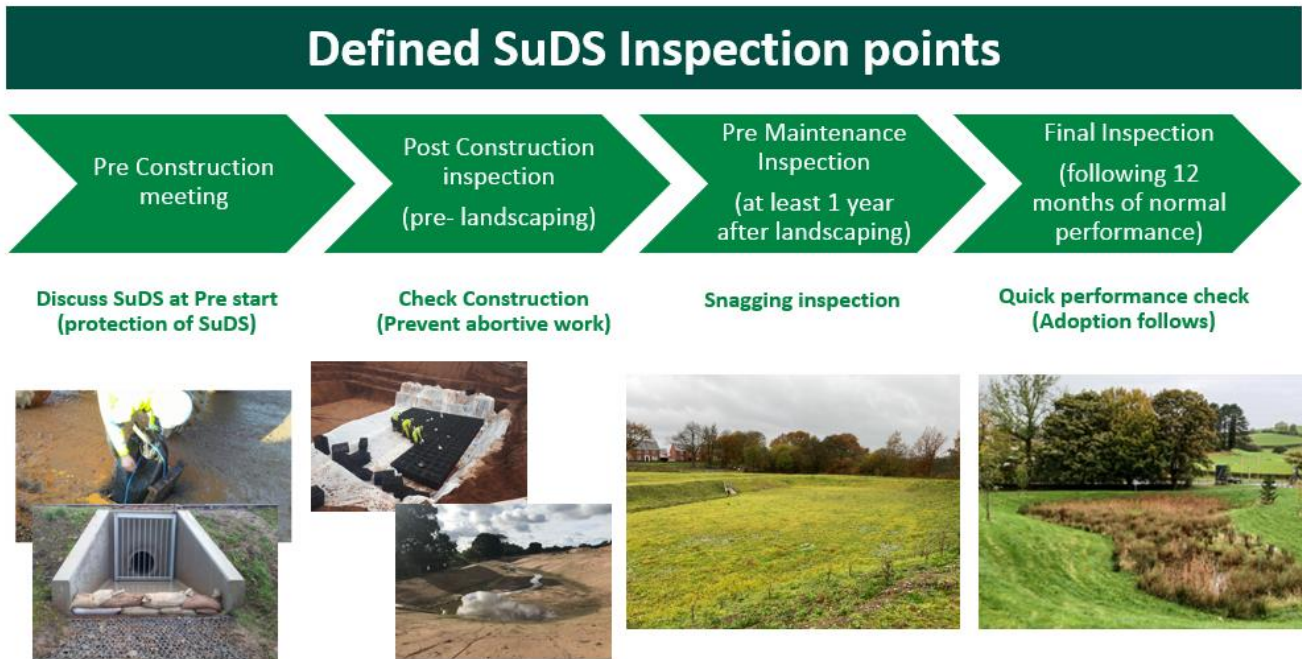
What do we mean by adoption?

Adoption is limited to maintaining the SuDS function as a sewer. All management of the amenity, including grass cutting and litter picking remains the responsibility of the landowner or developer. The landowner or developer will also remain responsible for all planning conditions associated with open space and landscaping featured which may be through a management company which is common on new development sites. We secure the relevant rights to access sewers (including SuDS) in private land through a deed of grant easement with the land owner.

What will we be doing differently?

We will design assess any inline SuDS features in accordance with the sewerage sector guidance; which for SuDS is outlined in the Design and Construction Guidance (DCG) and CIRIA SuDS Manual. We would advise that you become familiar with [our guidance documents](#) and take advantage of the [free pre design service](#) so that you don't experience any delays.

We will also start to inspect SuDS on site at the following points:



Got a question? Want to know more about SuDS adoption at UU?

We will be sharing more information about SuDS adoption at our upcoming Spring Technical Forum. You can also get in touch with us via seweradoptions@uuplc.co.uk